



ET Φ TM LED Characterization System

Electrical-Thermal-Optical LED Characterization System

Designing products that use high power LEDs just got a whole lot easier.

Features

- Complete Electrical-Thermal-Optical Data
- Automated Data Acquisition and Analysis
- LED Spectral Measurement
- TEC Temperature Control and Monitoring
- DC and PWM Power Supply Control
- Vf and If 4-Wire Measurement

Applications

Design & Development of Products Using LEDs

- LED Selection
- LED Qualification
- LED Characterization
- LED Benchmark Analysis
- LED Thermal Engineering
- LED Optical Engineering
- LED Electrical Engineering

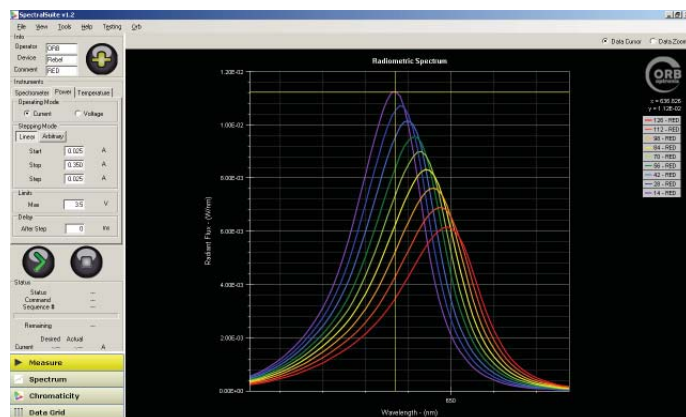
LED QA/ QC

- Incoming Inspection

LED Manufacturers and Distributors

- LED R&D
- LED Design
- Specification Sheet Data
- Application Engineering Data
- Customer Support

Highly Accurate LED Measurements



Orb Optronix, Inc.
1003 7th Ave, Suite B
Kirkland, WA 98033

www.OrbOptronix.com

© Orb Optronix Inc. 2009

phone: 425.605.8500

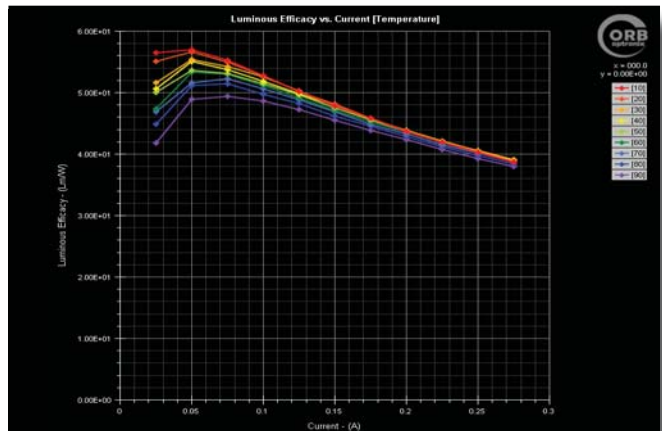
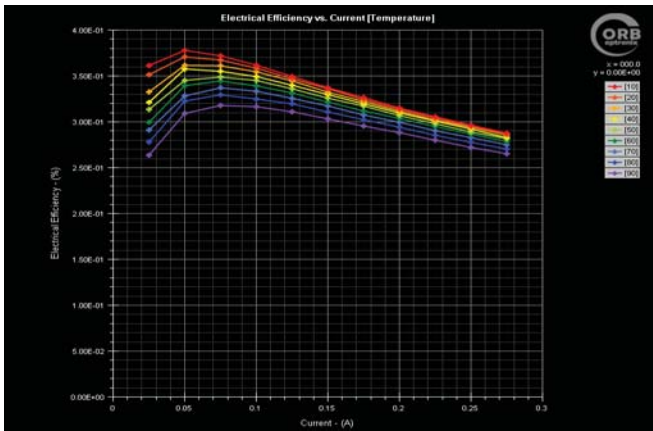
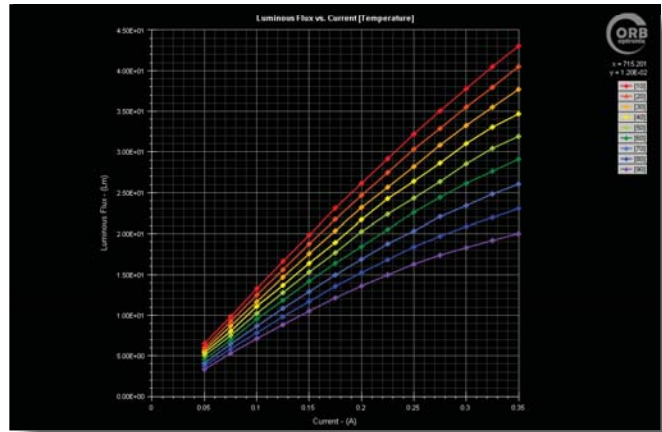
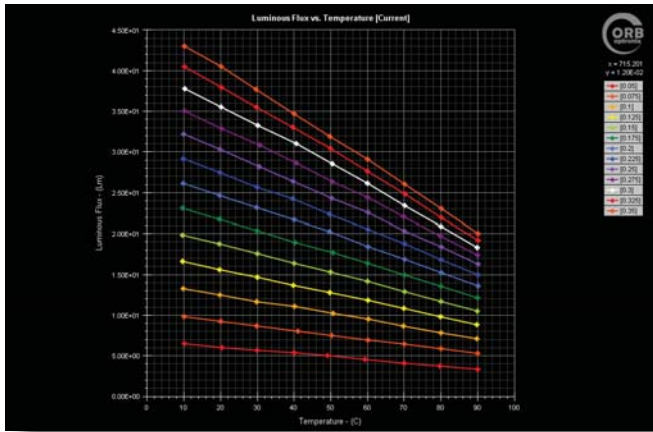
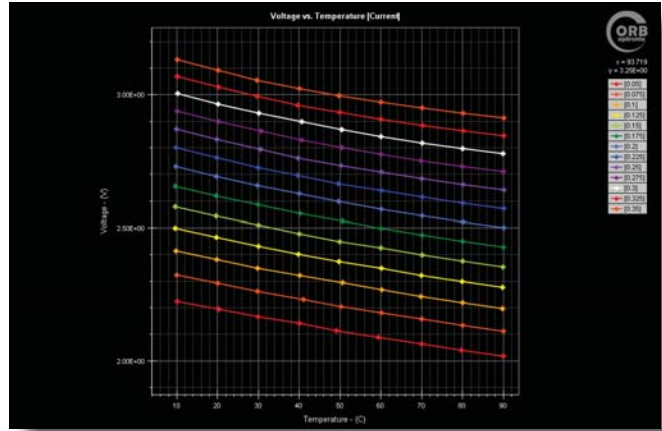
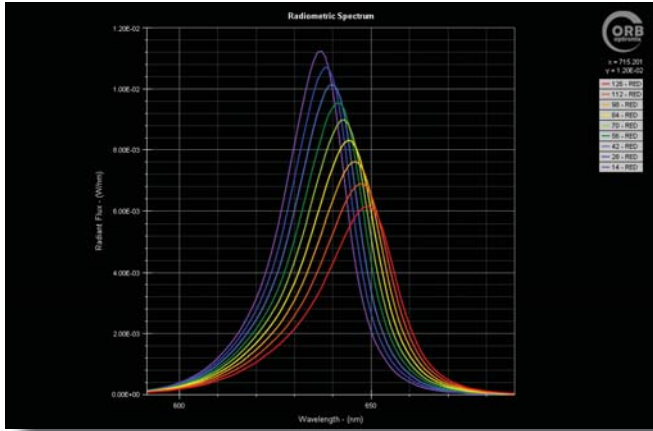
fax: 801.912.2645

email: sales@OrbOptronix.com



ETΦ™ LED Characterization System

Electrical-Thermal-Optical LED Characterization System



Orb Optronix, Inc.
1003 7th Ave, Suite B
Kirkland, WA 98033

www.OrbOptronix.com
© Orb Optronix Inc. 2009

phone: 425.605.8500
fax: 801.912.2645
email: sales@OrbOptronix.com



ET Φ TM LED Characterization System

Electrical-Thermal-Optical LED Characterization System



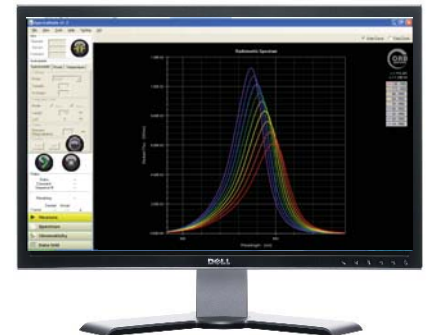
Electrical



Thermal



Analysis
Tools



Software
Control



Optical

Orb Optronix, Inc.
1003 7th Ave, Suite B
Kirkland, WA 98033

www.OrbOptronix.com

© Orb Optronix Inc. 2009

phone: 425.605.8500

fax: 801.912.2645

email: sales@OrbOptronix.com



ETΦ™ LED Characterization System

Electrical-Thermal-Optical LED Characterization System

Specifications

Array Resolution:	1024 pixel (SP-50-VIS and SP-50-UV) 2048 pixel (SP-50-NIR)
Spectral Range:	380 to 780nm (SP-50-VIS) 250 to 500nm (SP-50-UV) 360 to 1000nm (SP-50-NIR)
Optical Bandwidth:	4.1 nm (SP-50-VIS and SP-50-UV) 1.5 nm (SP-50-NIR)
Wavelength Binning Resolution:	1 nm
Dynamic Range Resolution:	14 bit
Optical Input:	SMA Fiber Connector
Wavelength Accuracy:	± 0.5 nm
Wavelength Repeatability:	± 0.2 nm
Stray Light:	< 10 ⁻³
Chromaticity Accuracy (x,y):	± 0.002
Chromaticity Repeatability (x,y):	± 0.0005
CCT Reproducibility:	± 20°K (Illuminant A)
Integration Time Range:	5 to 5,000 ms
Operating Environment:	10°C to 40°C and < 85% relative humidity
Interface:	USB 2.0
Power Supply:	Choice of Keithley™ 2400 or 2600 Series Models
Voltage Monitor	4-Wire
Thermal Control Range:	0°C to 100°C, 2W to 160W <i>Thermal control range dependent on thermal platform selected (contact sales)</i>
Thermal Control Repeatability:	+/- 0.5°C
Thermal Set-Point Resolution:	0.1°C
Interface:	USB 2.0 Connectivity

SpectralSuite™ Software Capabilities:

Complete test sequencing for automated control of current, temperature and spectral measurements.
Complete data analysis capabilities for automatic chart generation.

MODEL NUMBER	SPHERE SIZE		THERMAL PLATFORM DIAMETER		MOUNTING STAND	OPTION DESCRIPTION
	(in.)	(cm)	(in.)	(cm)		
ETO-S06-P2.5	6	15.2	2.5	6.35	Pedestal	
ETO-S20-P6-HPA	20	50.8	6	15.24	H-Frame	High-Power Air-Cooled
ETO-S20-P6-HPL	20	50.8	6	15.24	H-Frame	High Power Liquid-Cooled
ETO-S40-P6-HPA	40	101	6	15.24	H-Frame	High-Power Air-Cooled
ETO-S40-P6-HPL	40	101	6	15.24	H-Frame	High Power Liquid-Cooled
ETO-S65-P6-HPA	65	165	6	15.24	H-Frame	High-Power Air-Cooled
ETO-S65-P6-HPL	65	165	6	15.24	H-Frame	High-Power Liquid-Cooled
ETO-S76-P6-HPA	76	193	6	15.24	H-Frame	High-Power Air-Cooled
ETO-S75-P6-HPA	76	193	6	15.24	H-Frame	High-Power Liquid Cooled

Orb Optronix, Inc.
1003 7th Ave, Suite B
Kirkland, WA 98033

www.OrbOptronix.com
© Orb Optronix Inc. 2009

phone: 425.605.8500
fax: 801.912.2645
email: sales@OrbOptronix.com